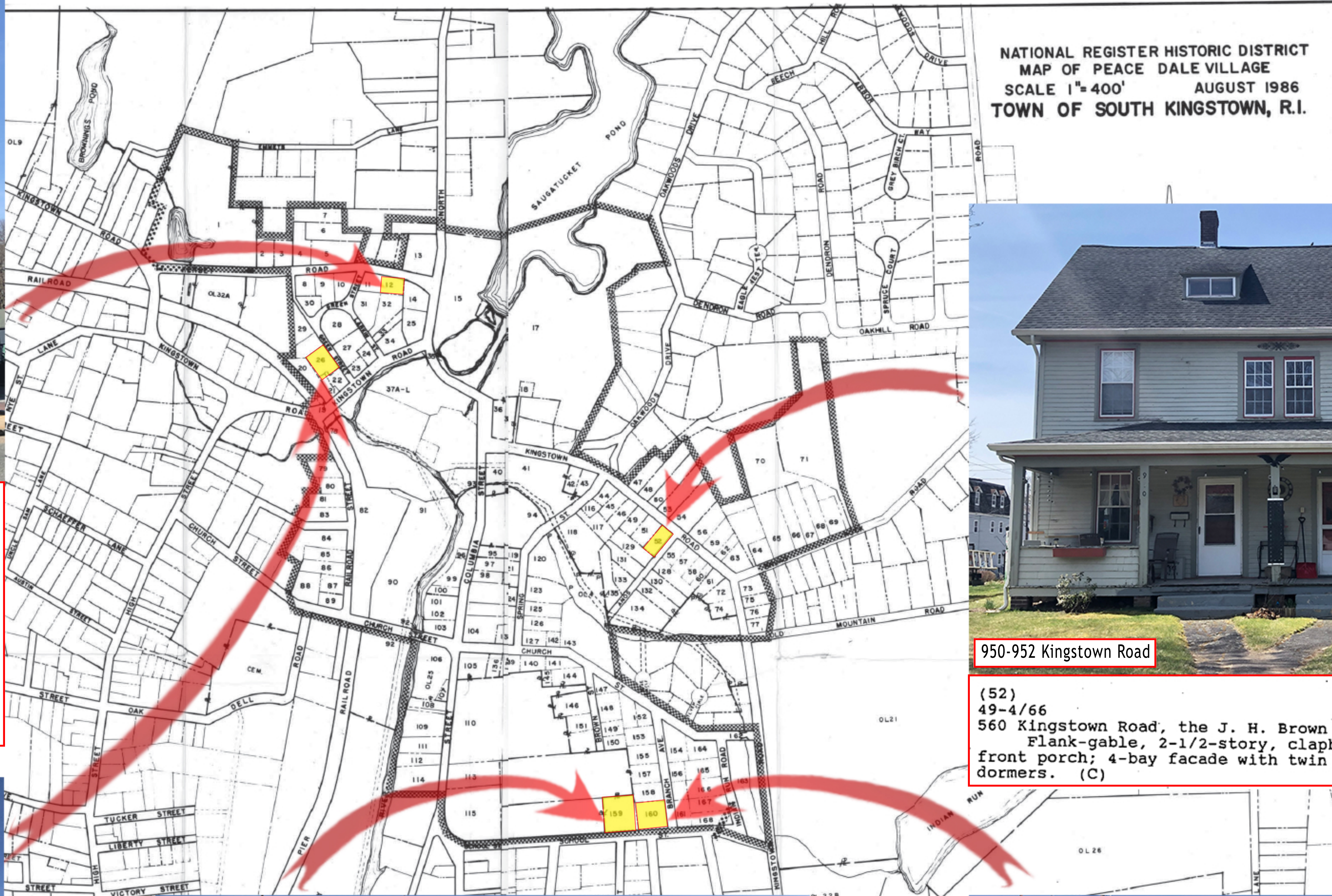




22 Kersey Road

(12)  
49-1/129  
8 Kersey Road, former Peace Dale Grammar School (1902):  
Attributed to architect Frank Angell, this 2-story, shingled schoolhouse displays his characteristic design sophistication as well as cognate details like the high hip roof with "kicked-out" eaves and the suppression of any elaboration of window openings. Unassuming yet somehow imposing, a cross-gable on the building's roof carries a louvered belfry. There is a very simple hip-roofed entrance porch with shingled piers. On each side elevation the banks of classroom windows are articulated by curious pilasters flanking the central window. Despite the fact that this building is out of Town ownership and now is used largely for storage, it remains handsome and well preserved, a fine and now rare example of a once common building type. (C)



NATIONAL REGISTER HISTORIC DISTRICT  
MAP OF PEACE DALE VILLAGE  
SCALE 1"=400' AUGUST 1986  
TOWN OF SOUTH KINGSTOWN, R.I.



950-952 Kingstown Road

(52)  
49-4/66  
560 Kingstown Road, the J. H. Brown House (c. 1865):  
Flank-gable, 2-1/2-story, clapboard tenement; hip-roofed front porch; 4-bay facade with twin entrances; 2 small shed dormers. (C)



12-18 Green Street

(26)  
49-1/148  
8-14 Green Street (c. 1900):  
Standing on the site of Joseph Hazard's mill pond, this 4-unit row house was erected by the Peace Dale Manufacturing Company. The 1-1/2-story flank-gable building is accented by two cross gables. (C)



75 School Street

(159)  
57-1/120  
38-40 School Street, former South Kingstown High School, now the School Street Apartments (c. 1880/c1915):  
Originally much smaller and built as a high school at the corner of School Street and Columbia Street, the building was moved here when the Hazard School was built to replace it (see #115). As altered for apartment use, the building is a 2-1/2-story, flank-gable structure with cross-gable oriels. It has a high stone basement, aluminum clapboard on the first story, and wood shingle above. (C)



2 Branch Street

(160)  
57-1/211  
----School Street, northwest corner Branch (c. 1900):  
Hip-roofed, 2-story, 5-bay, clapboard and shingle house; central entrance within a turned-post porch. (C)