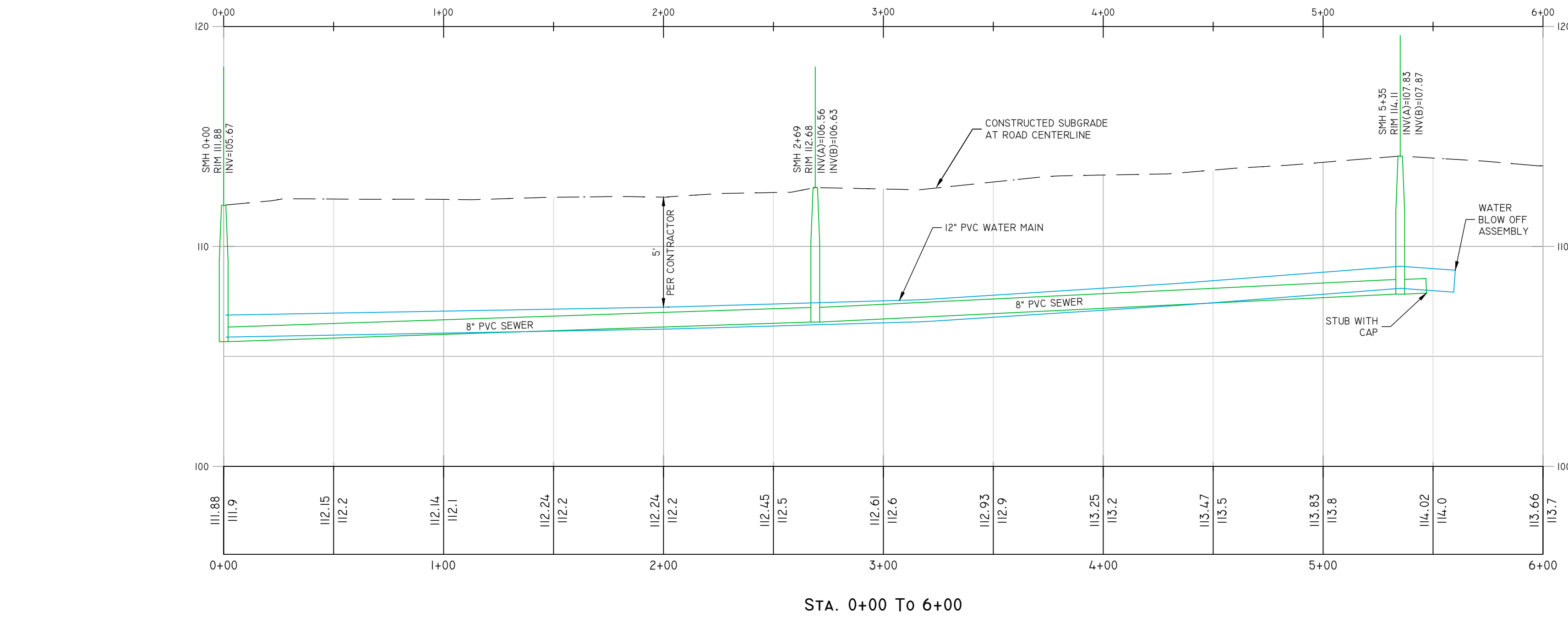
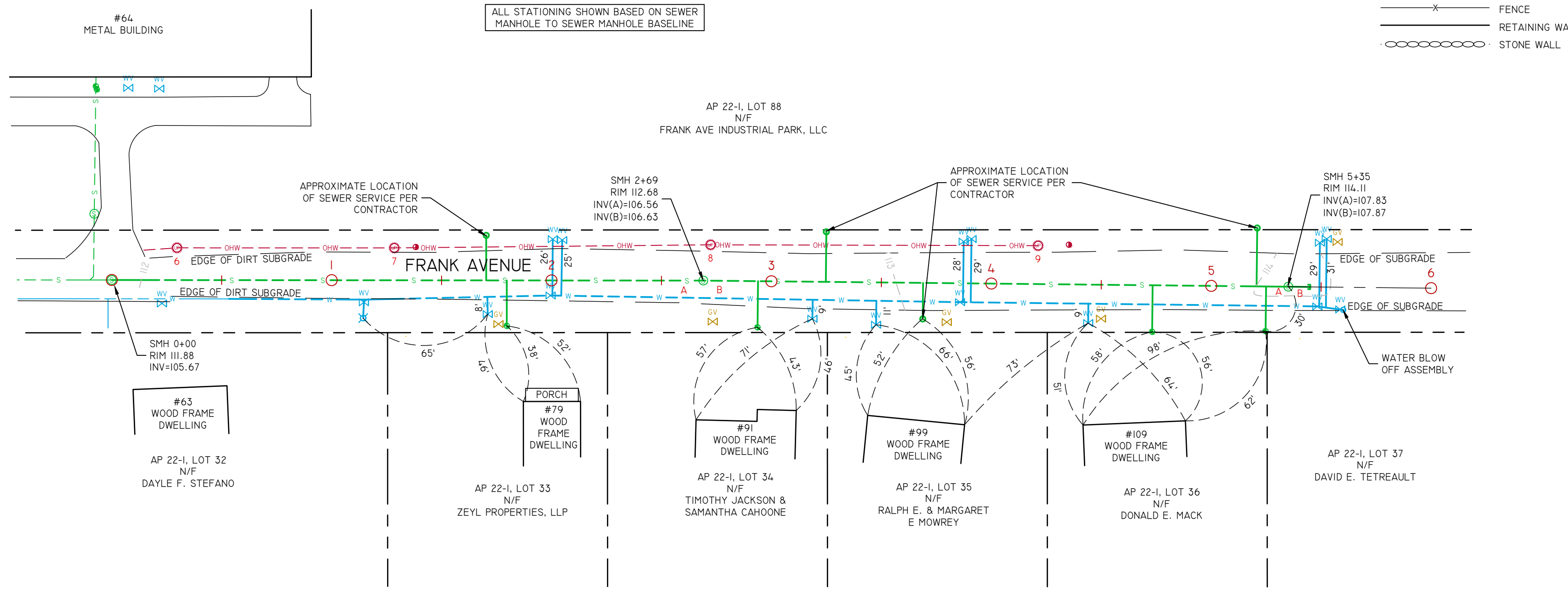




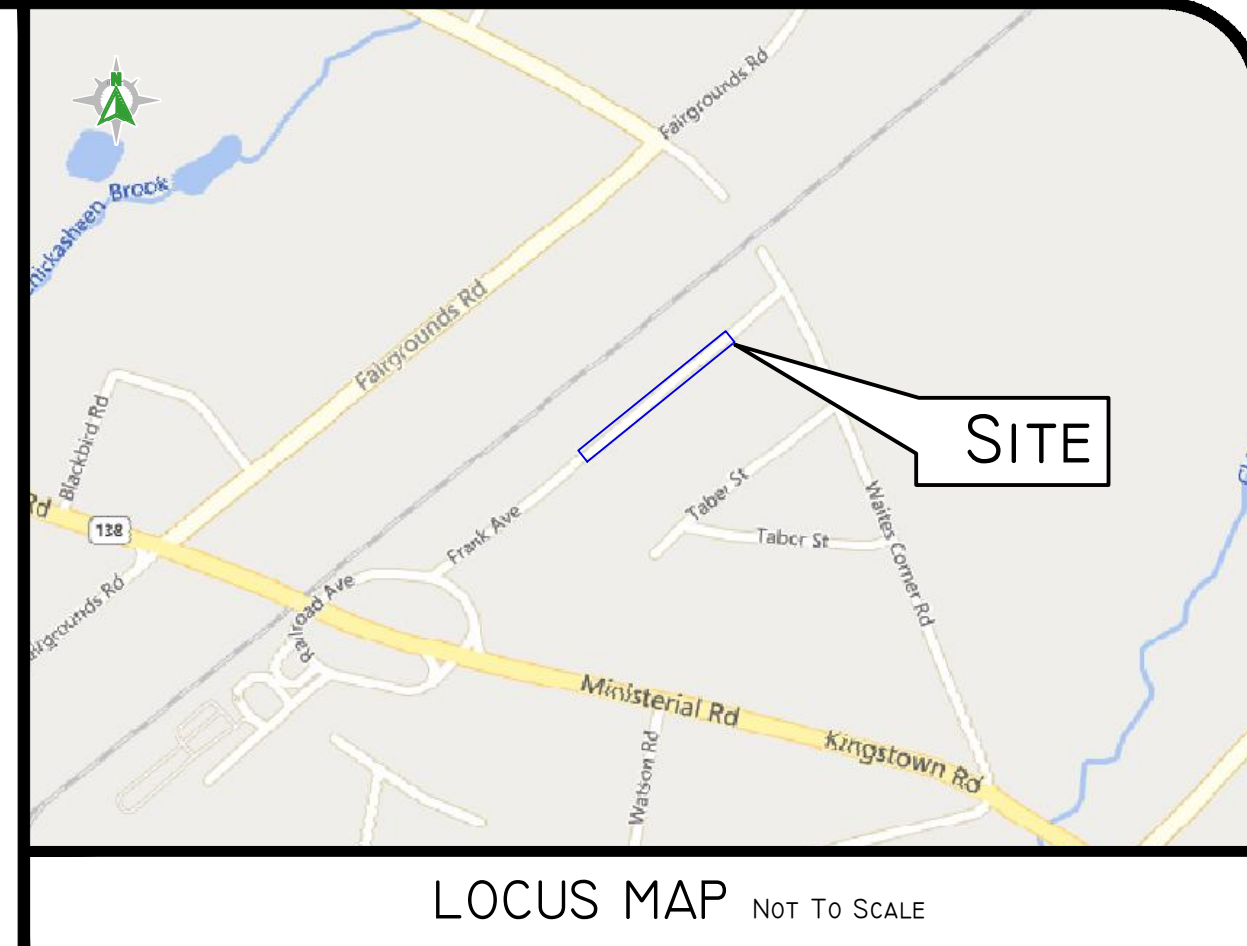
WATER LATERAL				SEWER LATERAL			
AP/LOT	STATION	BL OFFSET	DEPTH*	AP/LOT	STATION	BL OFFSET	DEPTH*
22-1/33	1+71	15'R	5'	22-1/88	1+70	20'L	6'
22-1/88	2+01	19'L	5'	22-1/33	1+80	21'R	6'
22-1/88	2+05	18'L	5'	22-1/30	2+96	21'R	6'
22-1/34	3+19	17'R	5'	22-1/80	3+25	23'L	6'
22-1/35	3+48	19'R	5'	22-1/35	3+69	16'R	6'
22-1/88	3+87	19'L	5'	22-1/30	4+73	21'R	6'
22-1/88	3+91	20'L	5'	22-1/88	5+21	27'L	6'
22-1/36	4+44	17'R	5'	22-1/37	5+25	20'R	6'
22-1/88	5+49	20'L	5'				
22-1/88	5+52	22'L	5'				

\*PER CONTRACTOR



**LEGEND**

---	W	WATER LINE	I23/I23A	DEED BOOK/PAGE	○	BOLLARD
---	S	SEWER LINE	AP	ASSESSOR'S PLAT	⊙	SOIL EVALUATION
---	SM	SEWER FORCE MAIN	HC	HANDICAPPED	⊠	CATCH BASIN
---	G	GAS LINE	N/F	NOW OR FORMERLY	⊠	DOUBLE CATCH BASIN
---	E	ELECTRIC LINE	LC	LANDSCAPING	⊠	WATER VALVE
---	OHW	OVERHEAD WIRES	(R)	RECORD	⊠	GAS VALVE
---	D	DRAINAGE LINE	(CA)	CHORD ANGLE	⊠	WETLAND FLAG
---	MCL	MINOR CONTOUR LINE	▲	NAIL/SPIKE	⊠	DRAINAGE MANHOLE
---	MCL	MAJOR CONTOUR LINE	●	DRILL HOLE	⊠	FLARED END SECTION
---	AS	ASSESSORS LINE	⊙	IRON ROD/PIPE	⊠	ELECTRIC MANHOLE
---	T	TREELINE	⊙	SEWER MANHOLE	⊠	LIGHTPOST
---	G	GUARDRAIL	⊙	SEWER CLEANOUT	⊠	UTILITY/POWER POLE
---	F	FENCE	⊙	HYDRANT	⊠	WELL
---	RW	RETAINING WALL	⊙	IRRIGATION VALVE	⊠	MONITORING WELL
---	SW	STONE WALL	⊙	UNKNOWN MANHOLE	⊠	BENCH MARK
					⊠	TREE



**GENERAL NOTES**

- FRANK AVENUE IS FOUND IN THE TOWN OF SOUTH KINGSTOWN, WASHINGTON COUNTY, RHODE ISLAND.
- FIELD SURVEY PERFORMED BY DIPRETE ENGINEERING ON MARCH 8, 2023. THIS PLAN REFLECTS ON THE GROUND CONDITIONS AS OF THAT DATE.
- ELEVATIONS SHOWN HEREON, IN U.S. SURVEY FEET, ARE REFERENCED TO THE NORTH AMERICAN VERTICAL DATUM OF 1988 (NAVD 88), AS DETERMINED BY DIPRETE ENGINEERING USING REAL TIME KINEMATIC G.P.S. OBSERVATIONS.

**UTILITY NOTES**

- ALL EXISTING UTILITIES DEPICTED ARE SHOWN ACCORDANCE WITH UTILITY QUALITY LEVEL C AS DEFINED IN CIVIL/ASCE STANDARD 38-02 (STANDARD GUIDELINES FOR THE COLLECTION AND DEPICTION OF EXISTING SUBSURFACE UTILITY DATA), LATEST REVISION.
- ALL EXISTING UNDERGROUND UTILITIES SHOWN WERE PROVIDED BY OTHERS AND ARE APPROXIMATE ONLY. LOCATIONS MUST BE DETERMINED IN THE FIELD BEFORE EXCAVATION, BLASTING, UTILITY INSTALLATION, BACKFILLING, GRADING, PAVEMENT RESTORATION, AND ALL OTHER SITE WORK. ALL UTILITY COMPANIES, PUBLIC AND PRIVATE, MUST BE CONTACTED INCLUDING THOSE IN CONTROL OF UTILITIES NOT SHOWN ON THESE DOCUMENTS. CONTACT DIG SAFE A MINIMUM OF 72 WORKING HOURS PRIOR TO ANY CONSTRUCTION AT 811. DIG SAFE IS RESPONSIBLE FOR CONTACTING MEMBER UTILITY COMPANIES. DIG SAFE MEMBER UTILITY COMPANIES ARE RESPONSIBLE TO MARK ONLY THE FACILITIES THAT THEY OWN OR MAINTAIN. NON DIG SAFE MEMBER COMPANIES ARE NOT NOTIFIED BY DIG SAFE. IT IS THE CONTRACTOR'S RESPONSIBILITY TO INVESTIGATE AND NOTIFY IF ANY PRIVATELY OWNED OR NON DIG SAFE MEMBER UTILITIES ARE IN THE AREA.
- PER THE CODE OF FEDERAL REGULATIONS - TITLE 29, PART 1926 IT IS THE SITE CONTRACTOR'S RESPONSIBILITY TO OBTAIN ACCURATE UNDERGROUND UTILITY LINE LOCATIONS FROM THE UTILITY COMPANIES, UTILITY OWNERS AND, OR VIA UNDERGROUND UTILITY LOCATION EQUIPMENT AS NEEDED TO ESTABLISH ACCURATE LOCATIONS PRIOR TO ANY EXCAVATION. THE USE OF PROFESSIONAL UTILITY LOCATING COMPANIES PRIOR TO ANY EXCAVATION IS RECOMMENDED.
- DIPRETE ENGINEERING IS NOT A PROFESSIONAL UTILITY LOCATION COMPANY, AND IS NOT RESPONSIBLE FOR UNDERGROUND UTILITIES, DEPICTED OR NOT, EITHER IN SERVICE OR ABANDONED. ANY SIZES, LOCATIONS, EXISTENCE, OR LACK OF EXISTENCE OF UTILITIES SHOWN ON THESE PLANS SHOULD BE CONSIDERED APPROXIMATE UNTIL VERIFIED BY A PROFESSIONAL UTILITY LOCATION COMPANY. DIPRETE ENGINEERING ASSUMES NO RESPONSIBILITY FOR DAMAGES INCURRED.
- UTILITY PLAN REFERENCES
  - WATER INFORMATION OBTAINED FROM SURFACE FEATURES LOCATED ON THE GROUND BY DIPRETE ENGINEERING. (SEE GENERAL NOTES FOR DATE OF FIELD SURVEY)
  - SEWER INFORMATION OBTAINED ON THE GROUND BY DIPRETE ENGINEERING. (SEE GENERAL NOTES FOR DATE OF FIELD SURVEY)

**SURVEYOR'S CERTIFICATE**

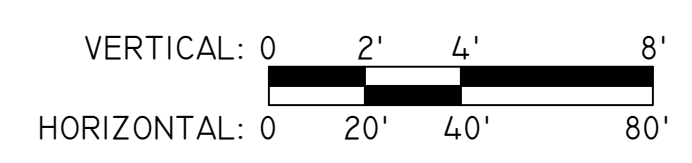
THIS SURVEY HAS BEEN CONDUCTED AND THE PLAN HAS BEEN PREPARED PURSUANT TO 435-RICR-00-00-1-9 OF THE RULES AND REGULATIONS ADOPTED BY THE RHODE ISLAND STATE BOARD OF REGISTRATION FOR PROFESSIONAL LAND SURVEYORS ON NOVEMBER 25, 2015, AS FOLLOWS:

- DATA ACCUMULATION SURVEY (AS BUILT SURVEY)

CLASS III  
(NOT A BOUNDARY SURVEY)

THE PURPOSE FOR THE CONDUCT OF THE SURVEY AND FOR THE PREPARATION OF THE PLAN IS AS FOLLOWS: AS BUILT SURVEY PERFORMED BY DIPRETE ENGINEERING FOR THE PURPOSE OF DESIGN CONFORMANCE REVIEW BY THE TOWN OF SOUTH KINGSTOWN.

MICHAEL E. GAVITT  
No. 1981  
4/6/23  
PROFESSIONAL LAND SURVEYOR



**Diprete Engineering**  
Two Stafford Court Cranston, RI 02920  
tel 401-943-1000 fax 401-464-6006 www.diprete-eng.com

**Boston • Providence • Newport**

**AS-BUILT SURVEY**  
**WESTERN INDUSTRIAL**  
SOUTH KINGSTOWN, RHODE ISLAND

PREPARED FOR:  
**SA BUILDERS**  
15 ROBERTSON ROAD, NARRAGANSETT, RHODE ISLAND 02882

DATE: 4/6/23  
BY: J.J.S.  
CHECKED: J.J.S.  
DESCRIPTION: AS-BUILT SURVEY

SHEET 1 OF 1