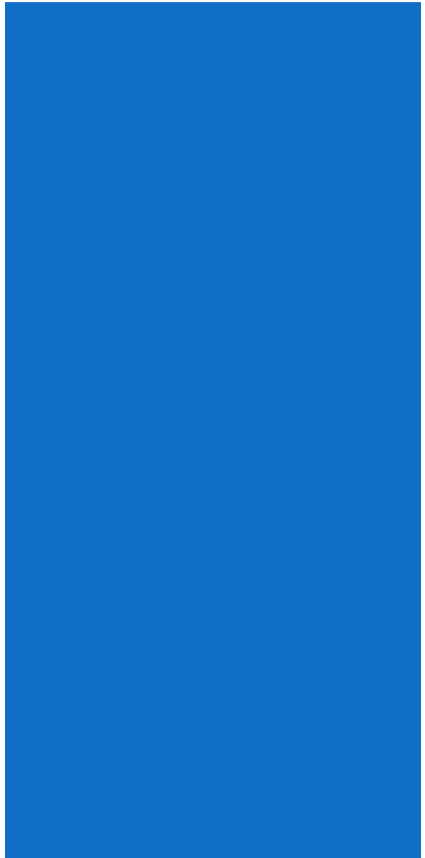


SOUTH KINGSTOWN, RI HAZARD MITIGATION PLAN UPDATE

SEPTEMBER 19, 2024



WHAT IS HAZARD MITIGATION?



FEMA

“Any sustained action taken to reduce or eliminate long-term risk to people and property from natural hazards.”



Examples:

- Limiting development in high-risk areas
- Retrofitting structures to protect them from floods, high winds, etc.
- Drainage improvements or other flood control projects in areas of localized flooding
- Community wildfire protection planning

BENEFITS OF HAZARD MITIGATION

A Local Mitigation Plan demonstrates the jurisdiction's commitment to reducing risk and serves as a guide for decision makers as they commit resources to minimize the effects of natural hazards.

The mitigation plan will:

- Help prepare for and mitigate the effects of natural hazards
- Build a more resilient community
- Qualify your towns for future federal disaster mitigation grants



NOAA

OUTREACH AND COORDINATION

- **Plan Update Process**
 - 4 HMP Committee Meetings (virtual)
- **Community Outreach**
 - HMP Project webpage
 - Fliers posted at local events
 - Publications in newspaper
- **One Public Meeting & one public presentation**
- **RIEMA/FEMA review and Approval pending Adoption**
- **Local adoption**

 Just now · 🌐

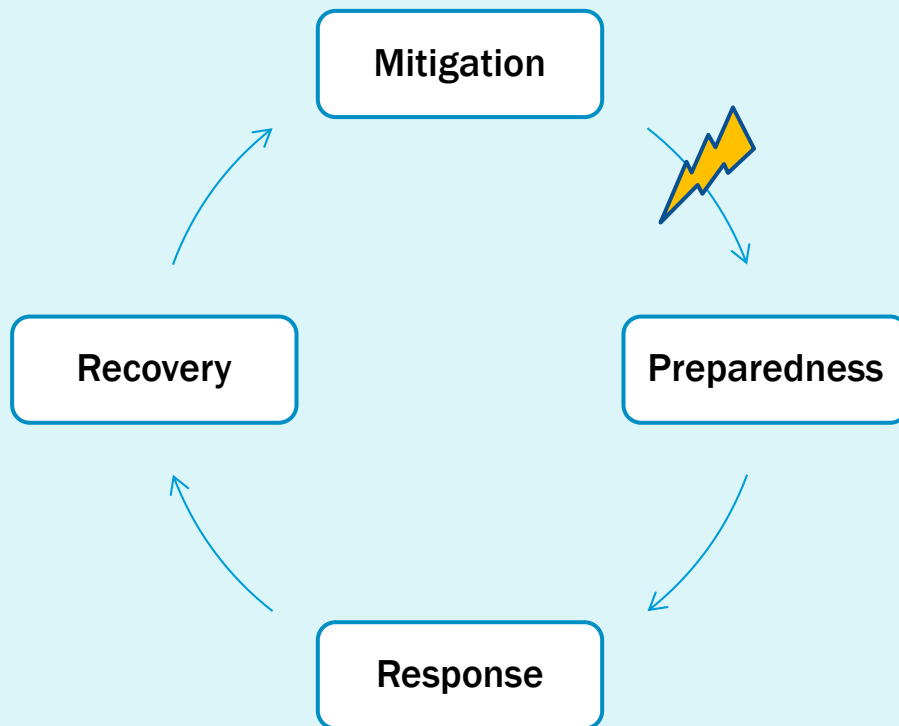
Planning Board ...

The Town is collaborating with residents and stakeholders on an update of the Town's Natural Hazard Mitigation Plan (HMP). The results of the planning process will inform future town spending on natural hazard mitigation, risk reduction, and climate resilience.

Please complete an online survey <https://www.surveymonkey.com/r/N9RWM7Q>. The survey will be open thru March 31, 2022.



EMERGENCY MANAGEMENT CYCLE



MITIGATION VS. EMERGENCY PREPAREDNESS

Hazard Mitigation

Planning and zoning

Open space preservation

Education and outreach

Drainage improvements

Preparedness

Evacuation plans and
emergency shelters

Radio communications
equipment

Emergency response
drills

MITIGATION PLANNING PROCESS



**RISK
ASSESSMENT**



**ESTABLISH
GOALS**

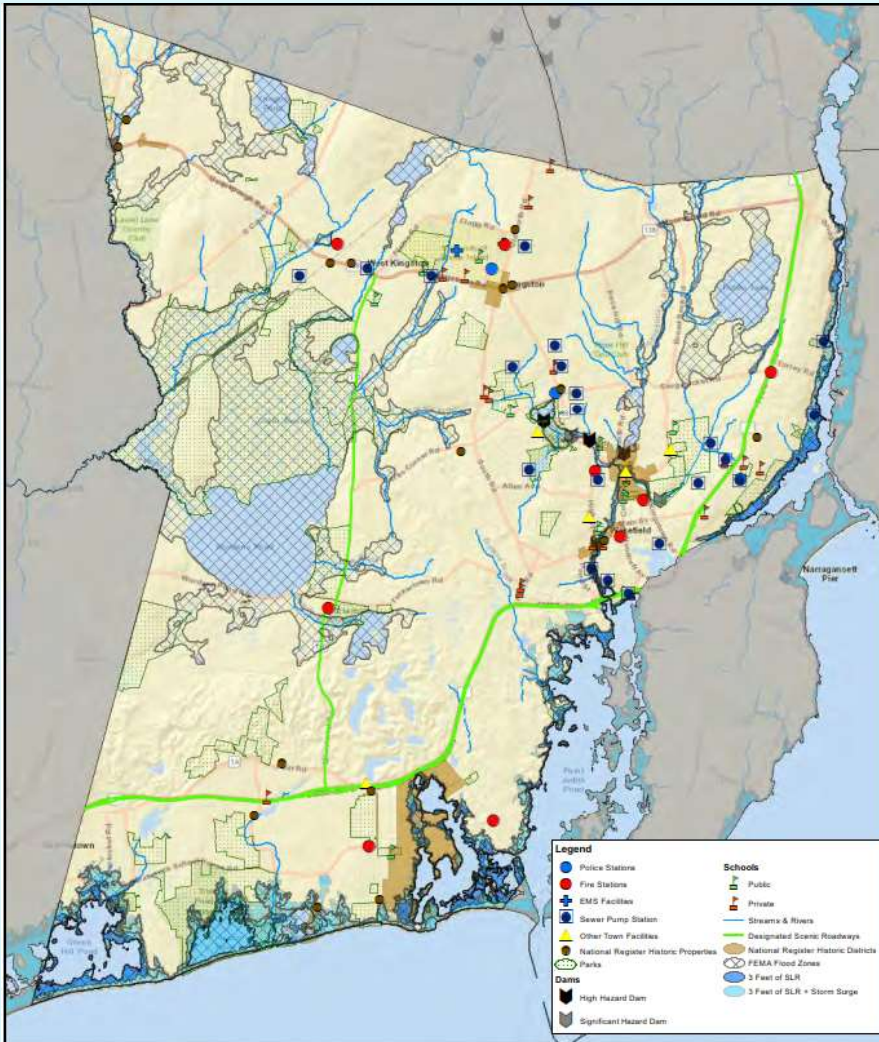


**IDENTIFY
PROJECTS/
ACTIONS**



**UPDATE/
MAINTAIN PLAN**

COMPONENTS OF AN HMP: RISK ASSESSMENT



- **Hazard Identification**
 - What are the hazards in your town?
- **Capability Assessment**
 - What are your current mitigation capabilities, and how effective are they?
- **Vulnerability Analysis**
 - How do these hazards impact the town, and what populations are particularly vulnerable?
- **Critical Facilities Inventory**
 - What buildings, and infrastructure are critical for town operation?

CLIMATE CHANGE AND RESILIENCY

Georgetown Climate Center ideas for promoting resilience within local government:

1. Consider climate change in local Hazard Mitigation Plans and Comprehensive Plans.
2. Develop regional collaboratives to coordinate adaptation planning across localities
3. Institute a bag fee to fund stormwater improvements and prepare for severe urban heat.
4. Use stormwater fees to acquire flood-prone properties.
5. Use a development checklist to ensure that new development is “climate smart”.
6. Budget for climate adaptation as part of capital improvement planning process.

COMPONENTS OF AN HMP: IDENTIFY MITIGATION ACTIONS

Mitigation Strategy = A blueprint for reducing losses identified in the risk assessment.

- What strategies have been implemented already?
- What new strategies should be pursued based on identified risks and vulnerabilities to natural hazards?

Mitigation Action Categories

- Planning and Prevention
- Property Protection
- Natural Resource Protection
- Structural Projects
- Emergency Services, and
- Public Education and Awareness



THE FINAL PRODUCT

South Kingstown, Rhode Island
Hazard Mitigation Plan
2025



BETA

315 Norwood Park South
2nd Floor
Norwood, Massachusetts 02062
781.255.1982
www.BETA-inc.com

PLANNING PROCESS

