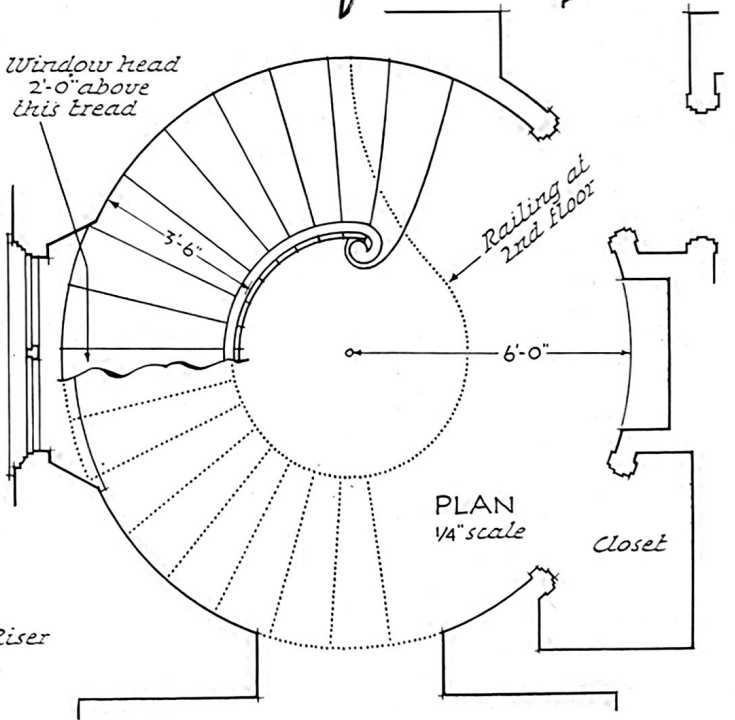
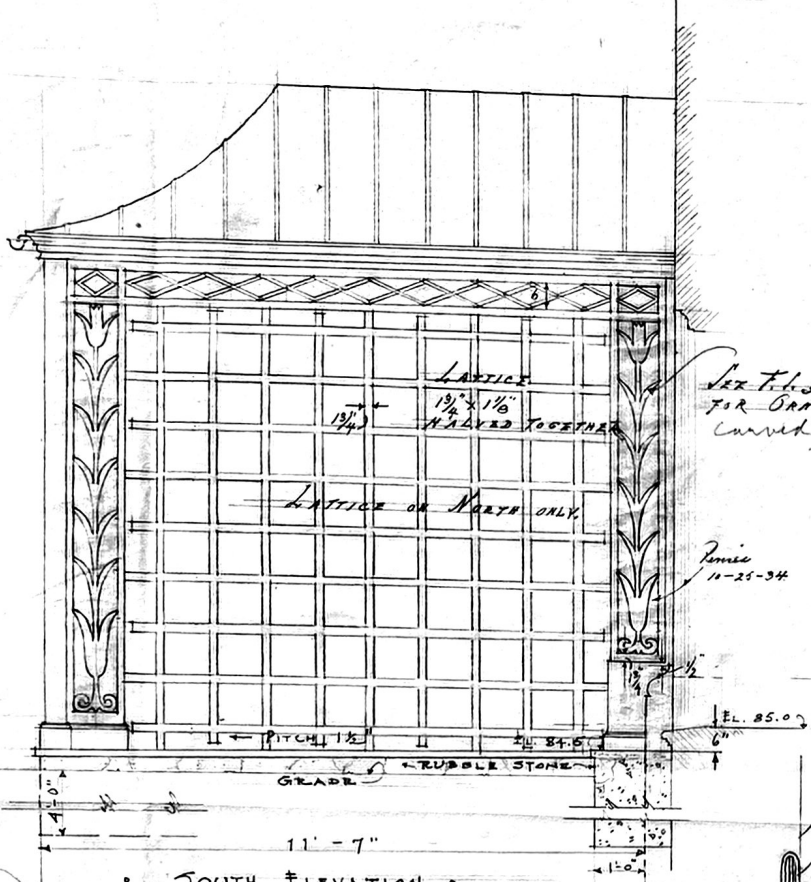


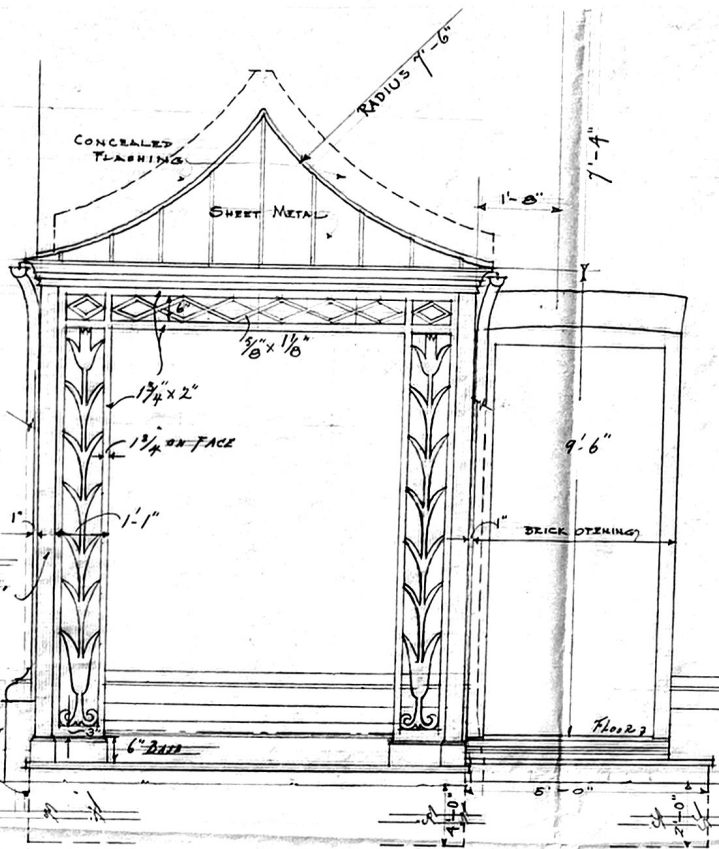
W. D. Miller, Wakefield R. I. RICHARD GARRISON



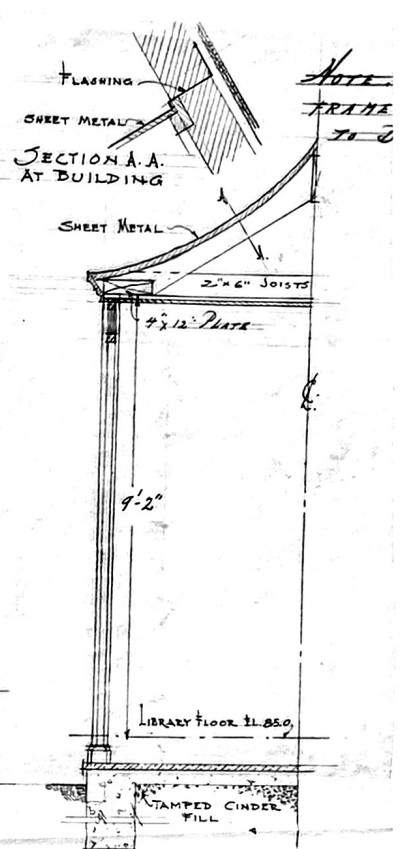
ALBERT HARKNESS Architect



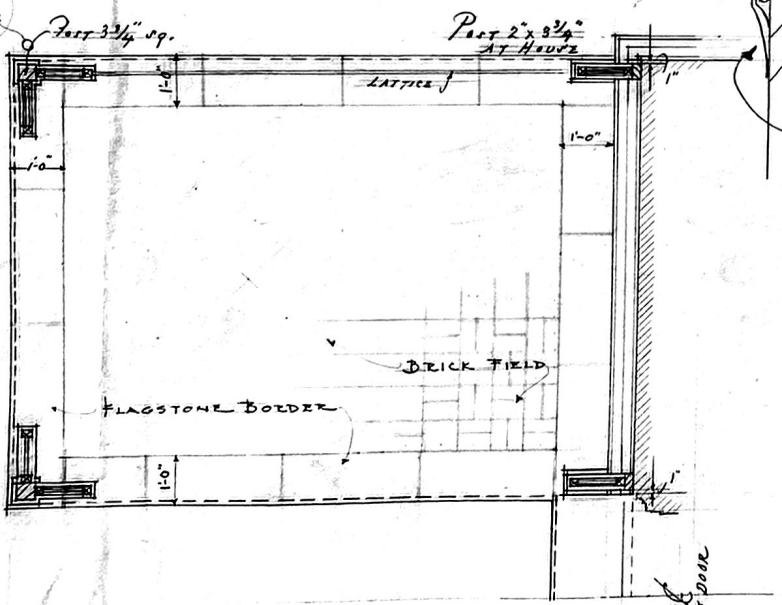
• SOUTH ELEVATION •



• WEST ELEVATION •

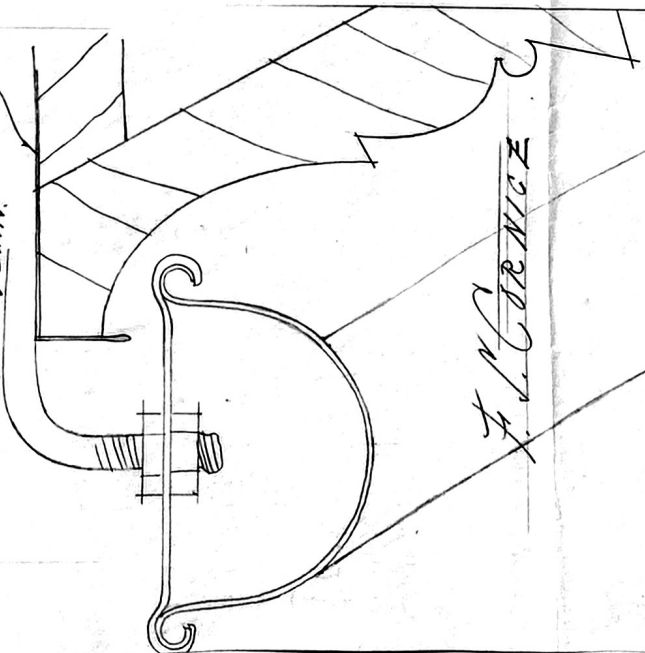


• SECTION •



• PLAN •

Lead Coated Copper
 Flat Seam.

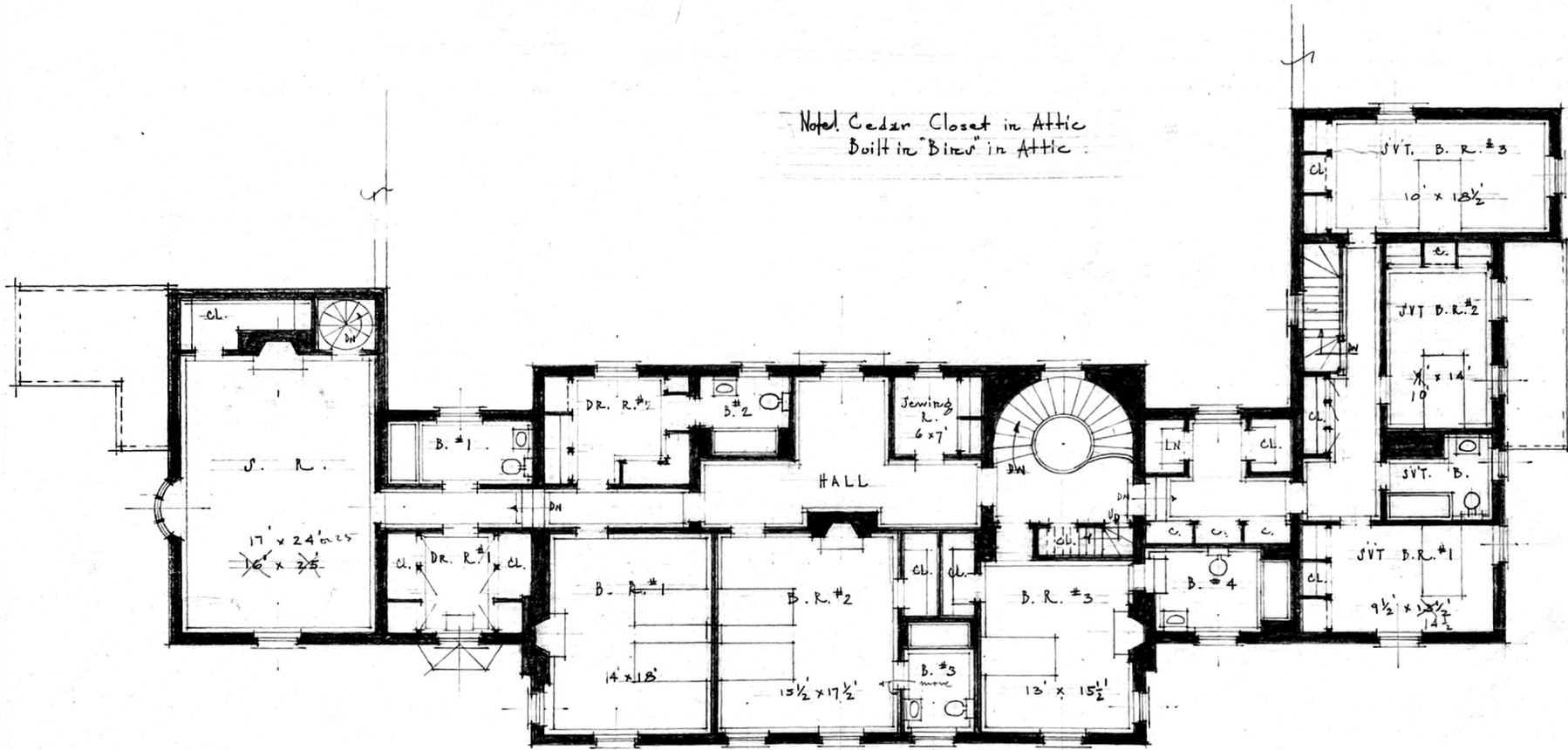


F. L. CORNICE

Miller
 West Point
 1934

Form 14
 10/17/34
 P.C.

Noted Cedar Closet in Attic
 Built in "Bites" in Attic



(REVISED 3-22-34)
 • SECOND FLOOR PLAN •
 Scale 1/8" = 1'-0"

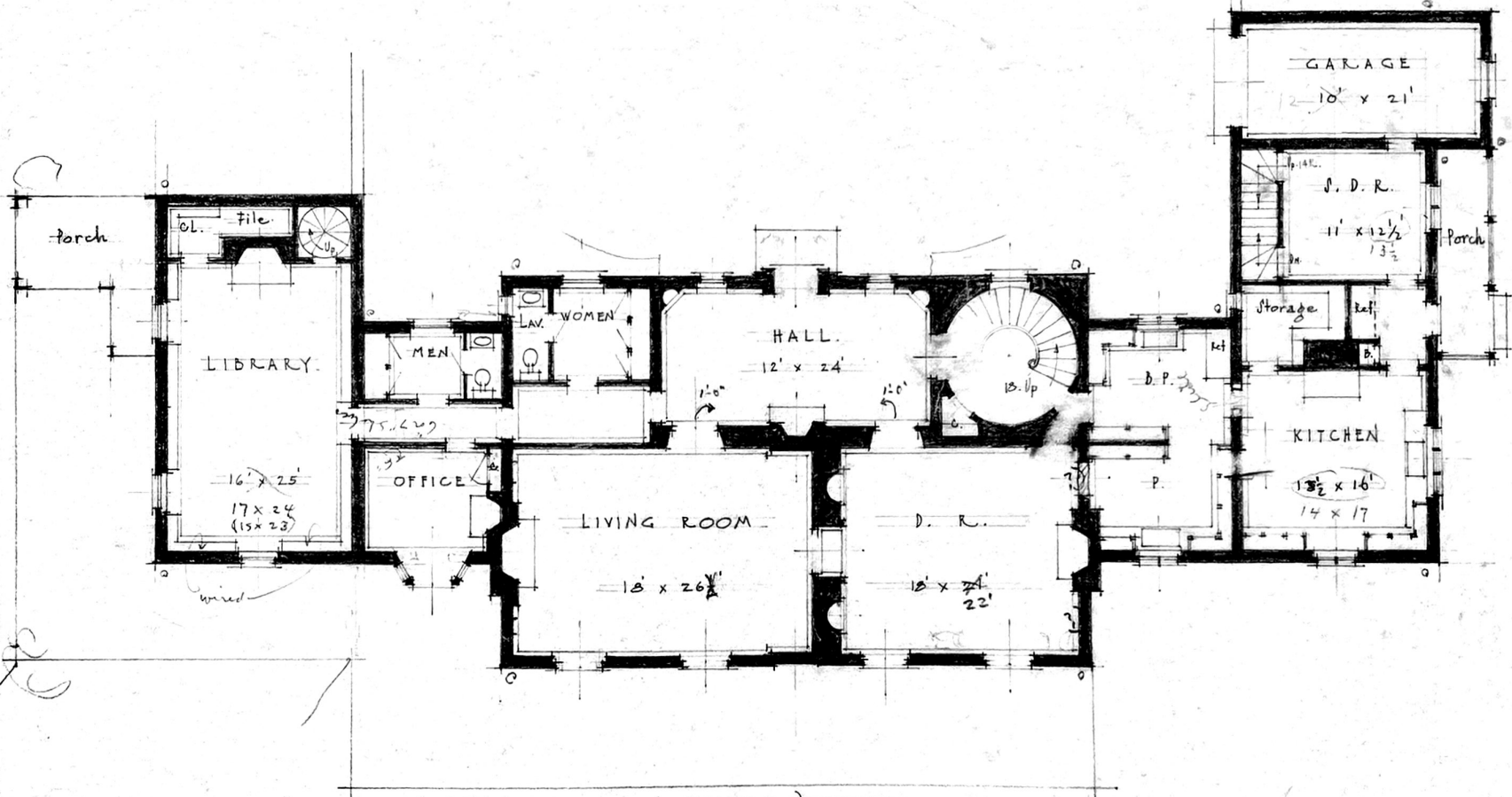
Sketch for
 • MRS WILLIAM D. MILLER •
 WAKEFIELD R.I.

ALBERT HARKNESS,
 ARCHITECT
 1428 Industrial Trust Bldg.
 PROVIDENCE, R. I.

166-1B

Revised
 (3-22-34)

3-16-34
 16 Mrs Miller 3-27-34
 " " " 4-3-34



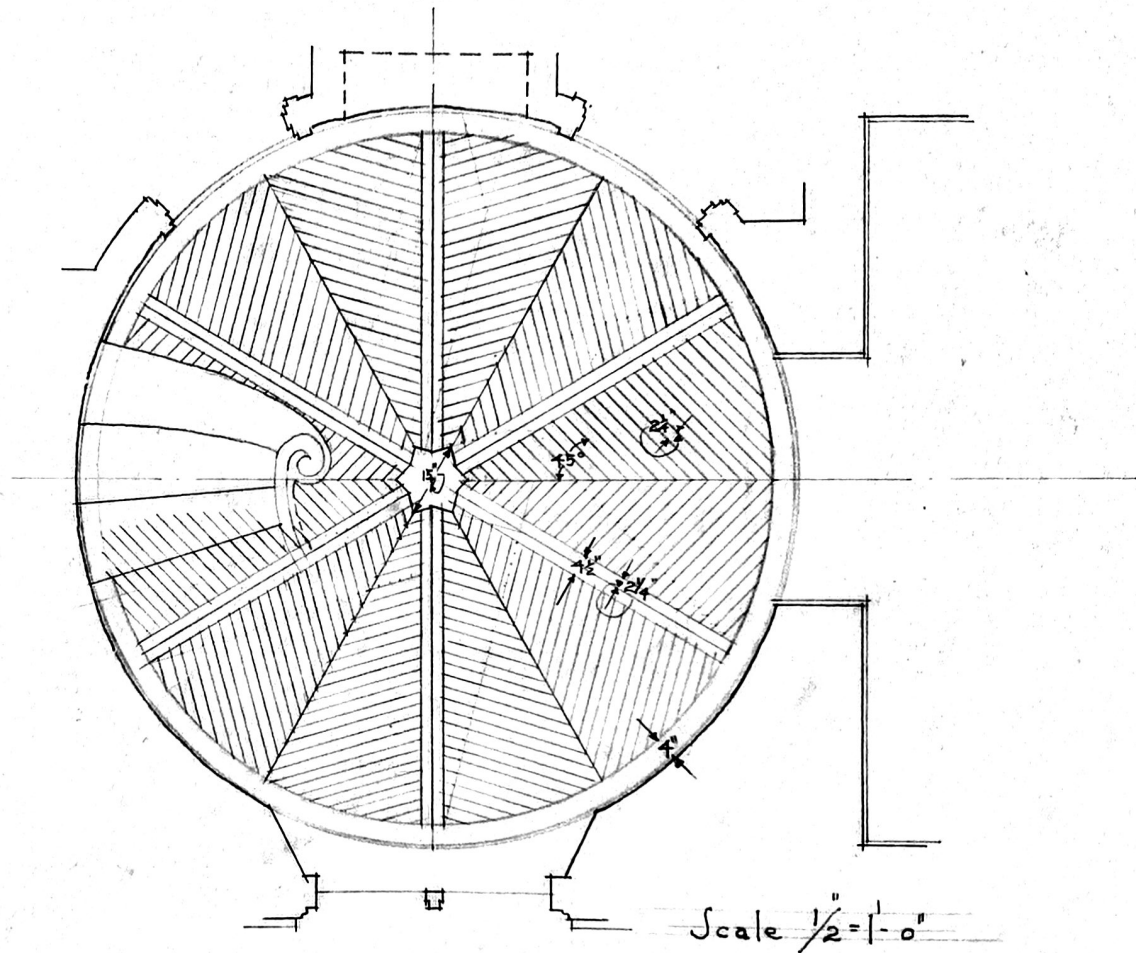
(REVISED)
 - FIRST FLOOR PLAN -
 Scale 1/8" = 1'-0"

Sketch for
 MR. WILLIAM D. MILLER
 WAKEFIELD

-166-23

ALBERT HARKNESS,
 ARCHITECT
 1428 Industrial Trust Bldg.
 PROVIDENCE, R. I.

3-22-34
 Revised 3-27-34
 16 Mr Miller 3-27-34
 " " " 4-3-34



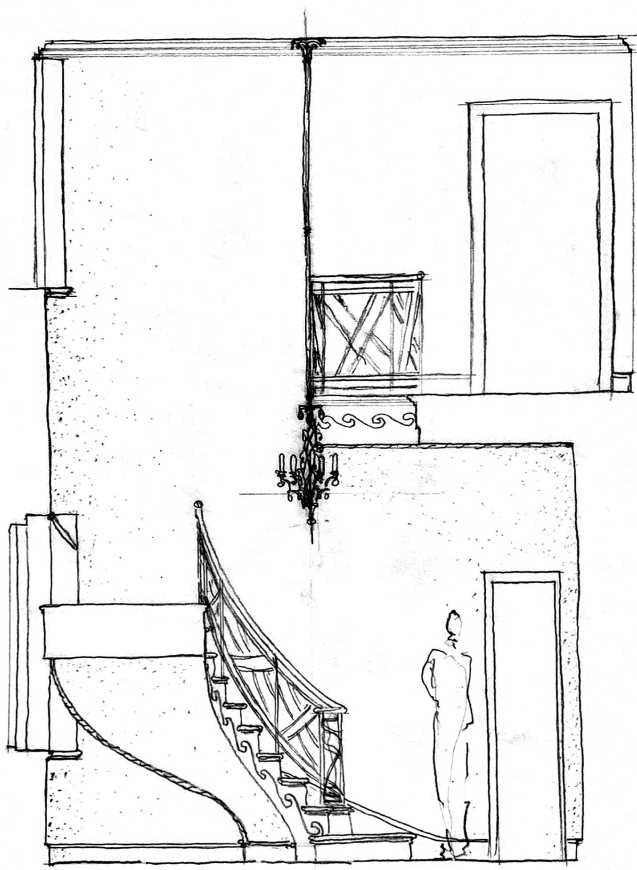
Sketch of Wood Floor for Stair Hall for
 • MRS. W. D. MILLER •
 WAKEFIELD R. I.

166-31

ALBERT HARKNESS,
 ARCHITECT
 1428 Industrial Trust Bldg.
 PROVIDENCE, R. I.

2-26-35

1 to C. H. & Williams
 2/20/35

$$\begin{array}{r} 8'-6'' \\ 1'-2'' \\ \hline 9'-8'' \\ 3 \\ \hline 9'-11'' \end{array}$$


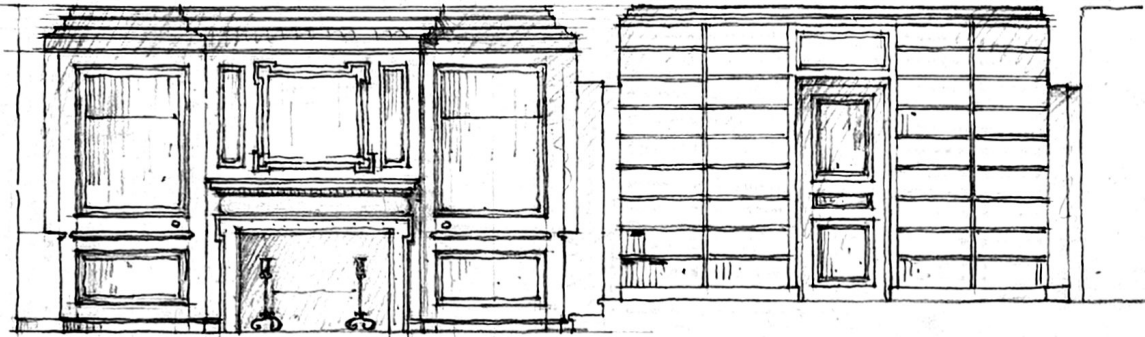
- Elevation -
- Scale 1/2" = 1'-0" -

Sketch of Stair Hall for
 - MRS. W. D. MILLER -
 - Wakefield R. I. -

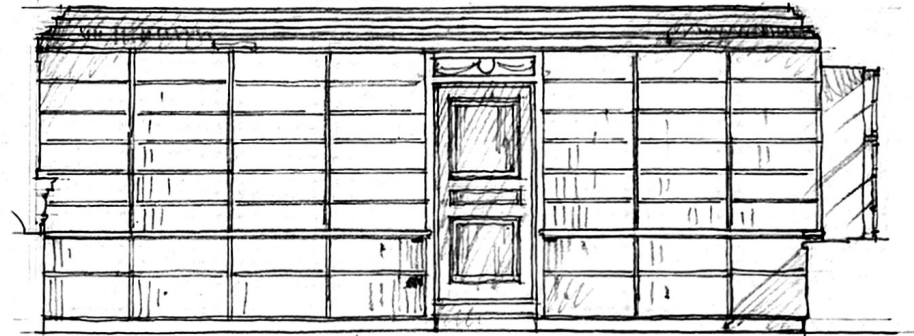
ALBERT HARKNESS,
 ARCHITECT
 1428 Industrial Trust Bldg.
 PROVIDENCE, R. I.

166-30

1-26-35
 140 Bradley St. Hubbard - 1-20-35

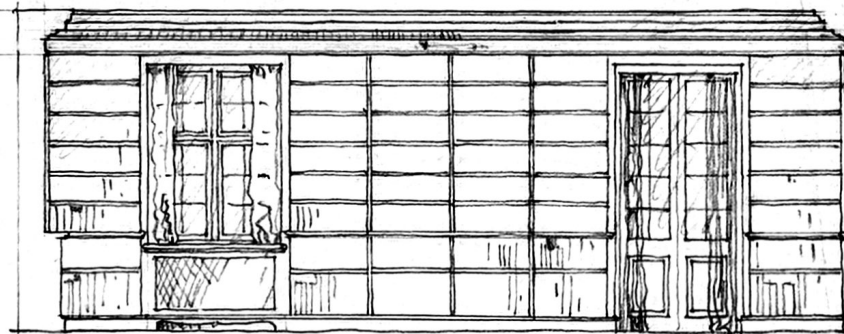


• NORTH •

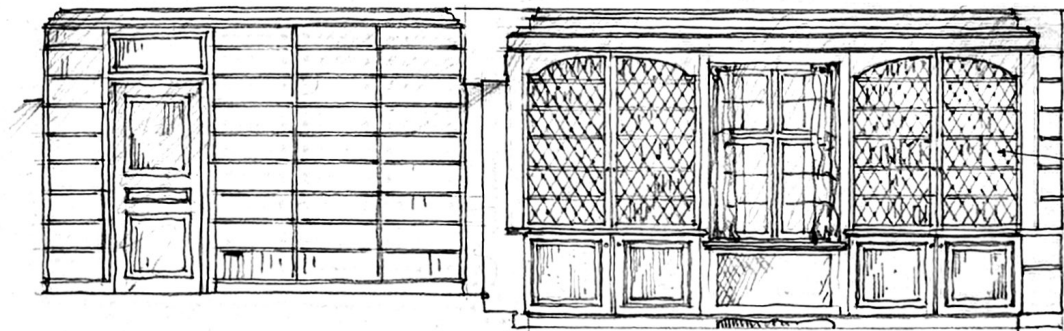


• EAST •

(Removable shelves under chair rail on East & West)



• WEST •



• SOUTH •

Wire Grille

Sketch for
• MRS. W. D. MILLER •
WAKEFIELD R. I.

• LIBRARY ELEVATIONS •
Scale 1/4" = 1'-0"

ALBERT HARKNESS,
ARCHITECT
1428 Industrial Trust Bldg.
PROVIDENCE, R. I.

166-24

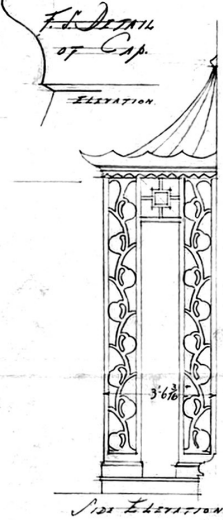
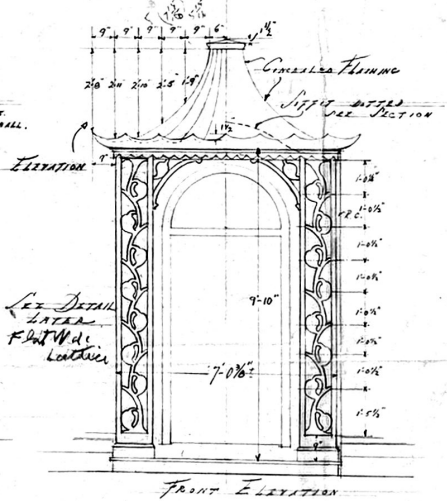
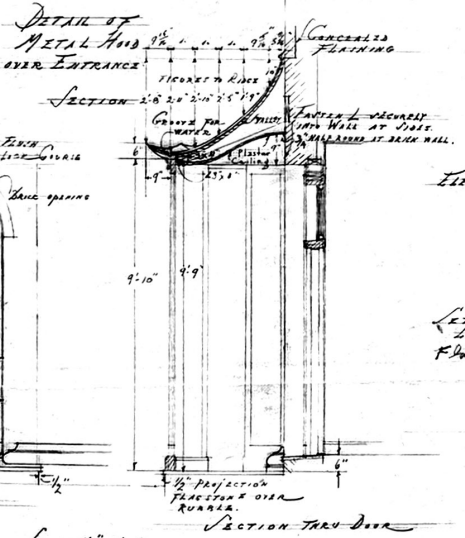
6-6-34
1 To Mr. Miller 6/8/34.
1 To Leslie 7/27/34

ALBERT HARRIS
ARCHITECT
126 Madison Street
PROVIDENCE, R. I.

House No. 6, 1910
246 Madison St. - Providence, R.I.
176 Madison St. - Providence, R.I.
176 Madison St. - Providence, R.I.
176 Madison St. - Providence, R.I.
176 Madison St. - Providence, R.I.

HOUSE FOR
MRS. WILLIAM D. MILLER.
WAKEFIELD
P. I.

NOTE. CHECK ANY DISCREPANCY
BETWEEN SIZE AND FAINT CURVES
WITH ARCHITECT

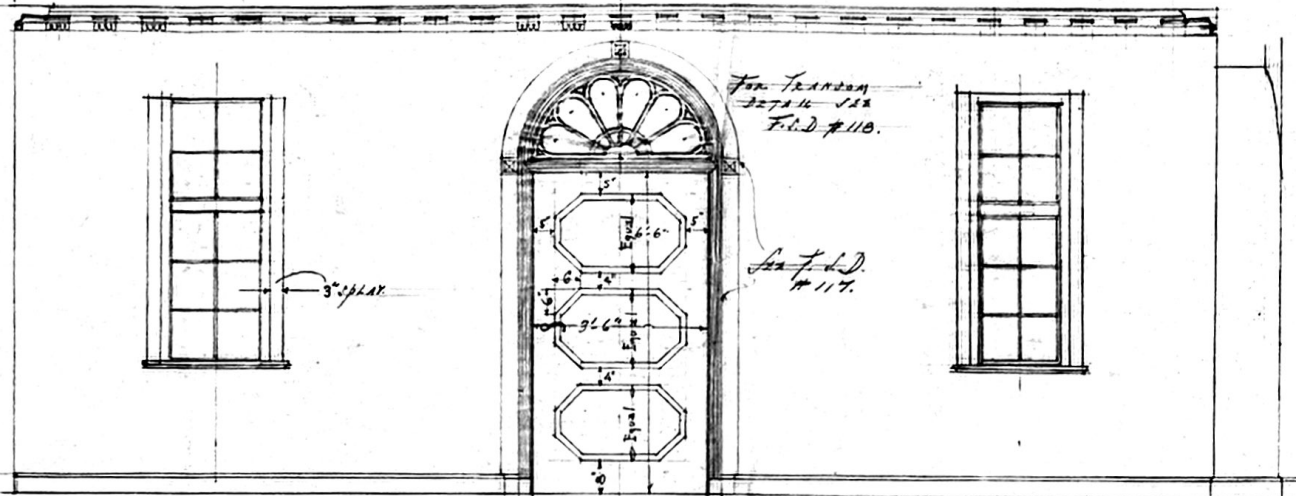


See F.P.D. #117
C #118 FOR DETAILS
SEE LATER
DETAIL FOR DOOR

ELEVATION

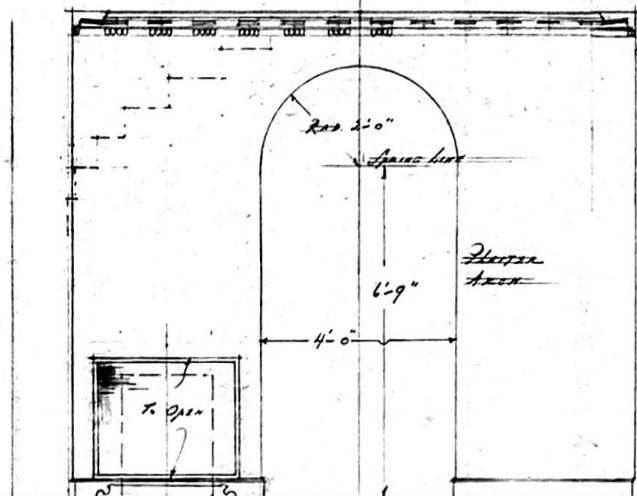
ELEVATION

ELEVATION

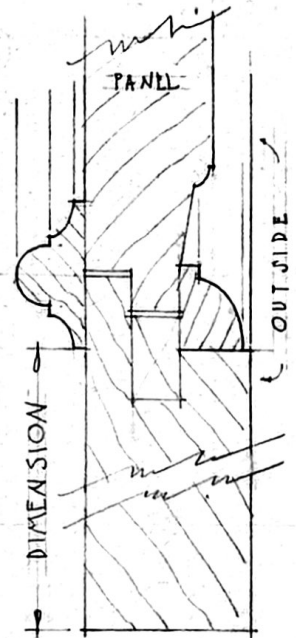


NORTH ELEVATION

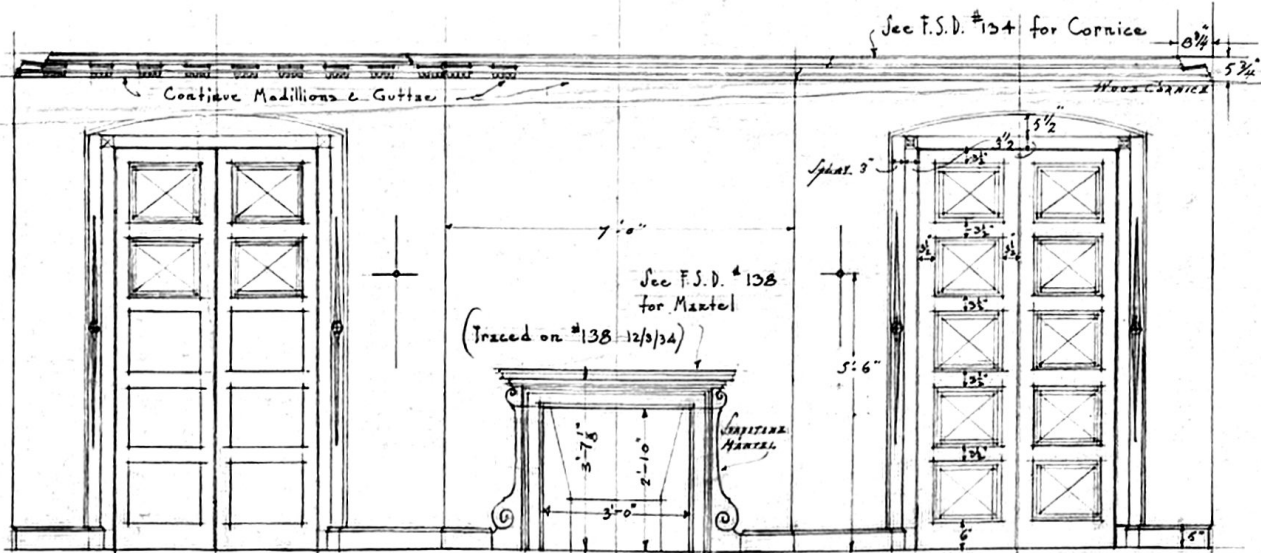
3'-6" x 6'-6" SILL



ELEVATION TOWARDS STAIR HALL

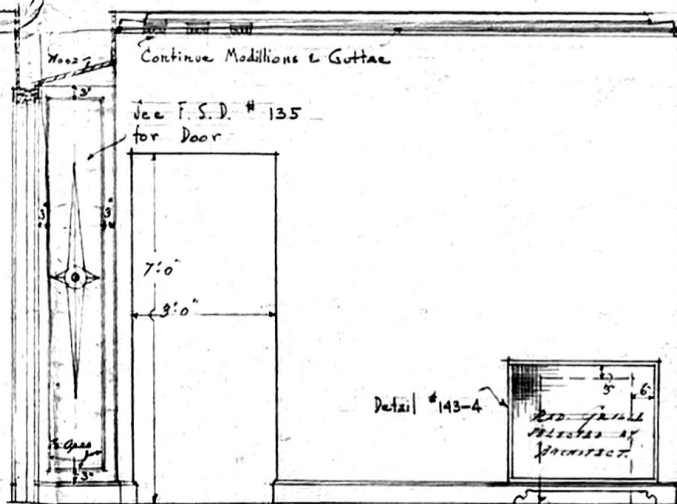


F.S.D. OF ENTRANCE DOOR

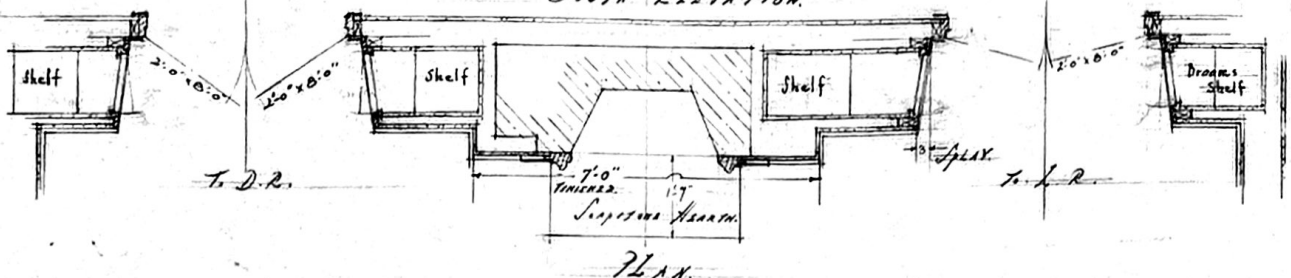


SOUTH ELEVATION

NOTE CHANGE OF DOOR SWING



WEST ELEVATION



PLAN

1/2" DETAIL OF ENTRANCE HALL
See F.S.D. #117 #118 #134 #135

TAKE ALL MEASUREMENTS AT BUILDING WORK SHOWN ON THIS DRAWING SUBJECT TO ACTUAL CONDITIONS.

PRINTS
1/4" = 1'-0"
1/2" = 1'-0"
3/4" = 1'-0"
1" = 1'-0"
1 1/4" = 1'-0"
1 1/2" = 1'-0"
1 3/4" = 1'-0"
2" = 1'-0"
2 1/4" = 1'-0"
2 1/2" = 1'-0"
2 3/4" = 1'-0"
3" = 1'-0"
3 1/4" = 1'-0"
3 1/2" = 1'-0"
3 3/4" = 1'-0"
4" = 1'-0"
4 1/4" = 1'-0"
4 1/2" = 1'-0"
4 3/4" = 1'-0"
5" = 1'-0"
5 1/4" = 1'-0"
5 1/2" = 1'-0"
5 3/4" = 1'-0"
6" = 1'-0"
6 1/4" = 1'-0"
6 1/2" = 1'-0"
6 3/4" = 1'-0"
7" = 1'-0"
7 1/4" = 1'-0"
7 1/2" = 1'-0"
7 3/4" = 1'-0"
8" = 1'-0"
8 1/4" = 1'-0"
8 1/2" = 1'-0"
8 3/4" = 1'-0"
9" = 1'-0"
9 1/4" = 1'-0"
9 1/2" = 1'-0"
9 3/4" = 1'-0"
10" = 1'-0"
10 1/4" = 1'-0"
10 1/2" = 1'-0"
10 3/4" = 1'-0"
11" = 1'-0"
11 1/4" = 1'-0"
11 1/2" = 1'-0"
11 3/4" = 1'-0"
12" = 1'-0"
12 1/4" = 1'-0"
12 1/2" = 1'-0"
12 3/4" = 1'-0"
13" = 1'-0"
13 1/4" = 1'-0"
13 1/2" = 1'-0"
13 3/4" = 1'-0"
14" = 1'-0"
14 1/4" = 1'-0"
14 1/2" = 1'-0"
14 3/4" = 1'-0"
15" = 1'-0"
15 1/4" = 1'-0"
15 1/2" = 1'-0"
15 3/4" = 1'-0"
16" = 1'-0"
16 1/4" = 1'-0"
16 1/2" = 1'-0"
16 3/4" = 1'-0"
17" = 1'-0"
17 1/4" = 1'-0"
17 1/2" = 1'-0"
17 3/4" = 1'-0"
18" = 1'-0"
18 1/4" = 1'-0"
18 1/2" = 1'-0"
18 3/4" = 1'-0"
19" = 1'-0"
19 1/4" = 1'-0"
19 1/2" = 1'-0"
19 3/4" = 1'-0"
20" = 1'-0"

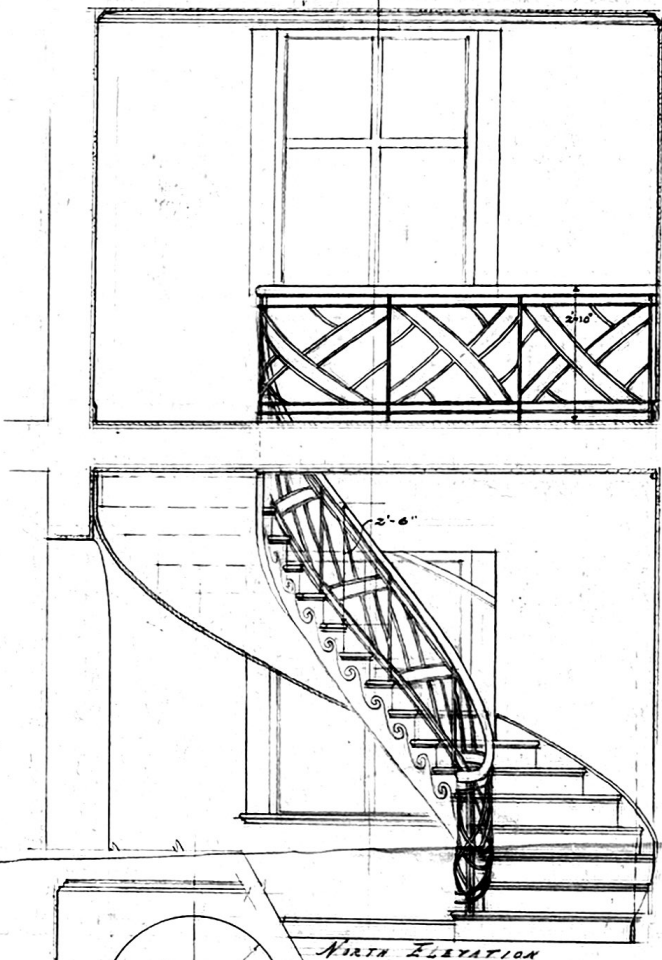
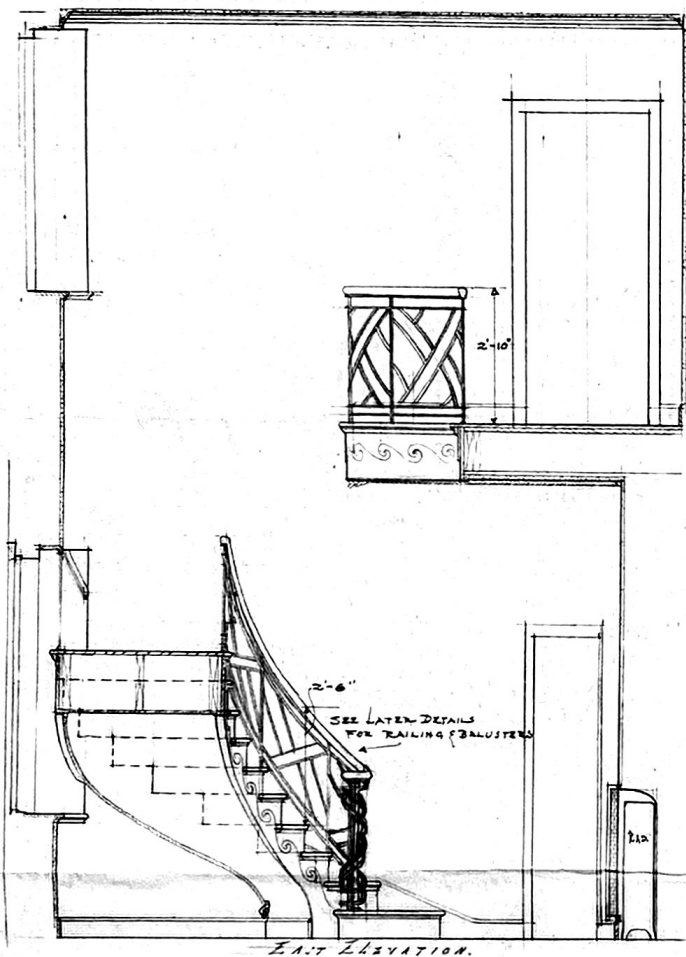
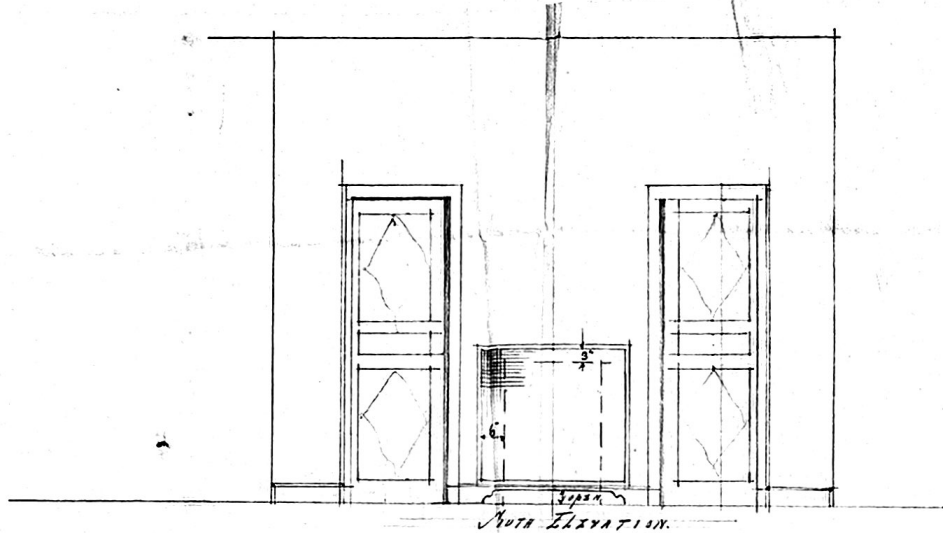
HOUSE FOR
MRS. WILLIAM D. MILLER
WAKFIELD

REVISED
F.S.D. of Entrance
Mantel Notes

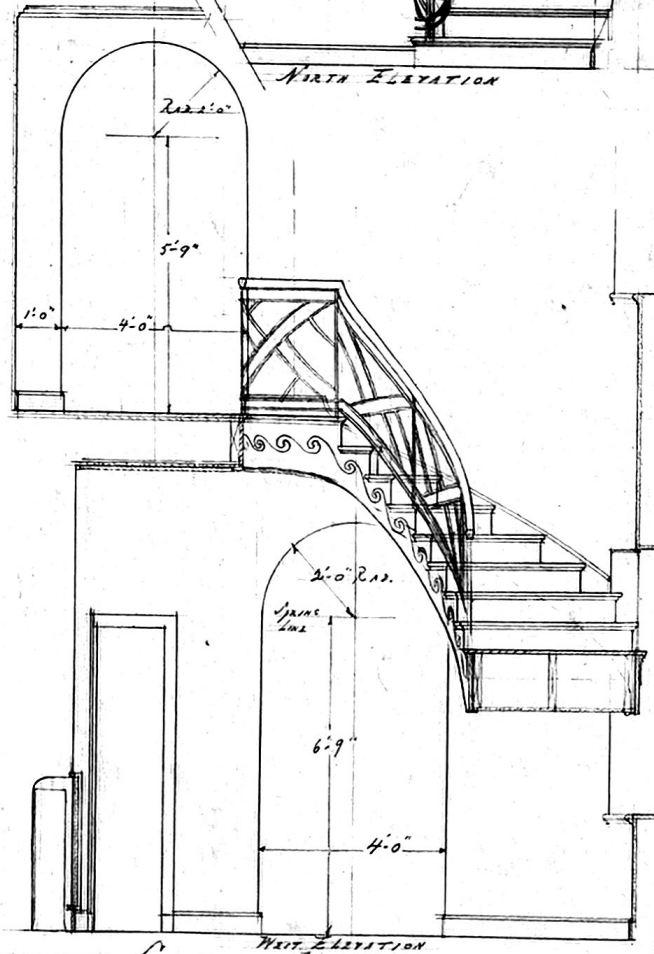
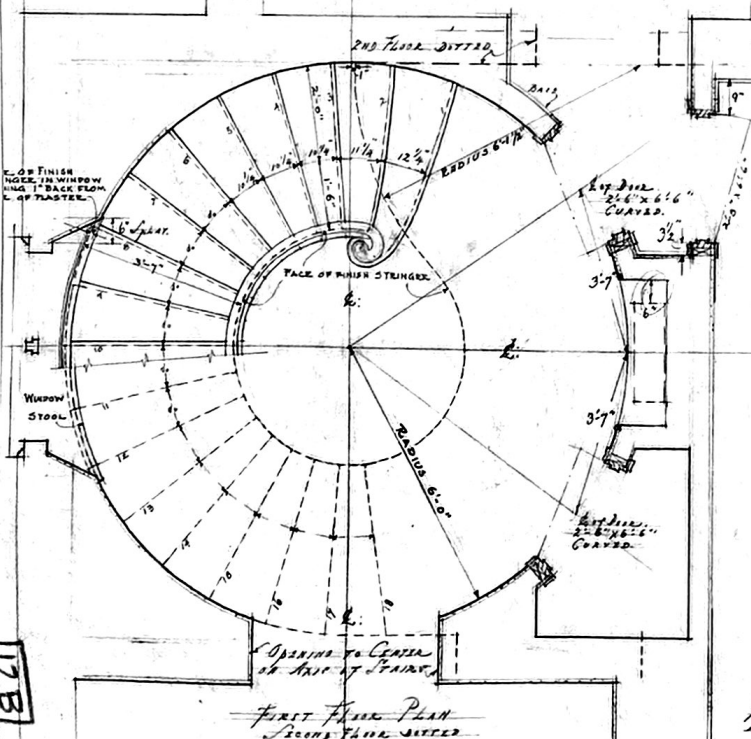
116

12B

SEP. 10. 1934



TAKE ALL MEASUREMENTS AT BUILDING
WORK SHOWN ON THIS DRAWING SUBJECT
TO ACTUAL CONDITIONS.



1/2" DETAIL OF STAIR HALL
SEE SHEET NO. 1132 FOR T. S. DETAILS. # 150 FOR WROUGHT IRON RAILING

122
9.12.34 11-2-34

HOUSE FOR
MRS. WILLIAM D. MILLER
WAKEFIELD
R. I.

PRICE
2 To Job 11-9-34
210 to Bill 13-9-35
170 Per Cent 12-2-35

ALBERT HARKNE
ARCHITECT
148 Industrial Trust Bldg
PROVIDENCE, R. I.