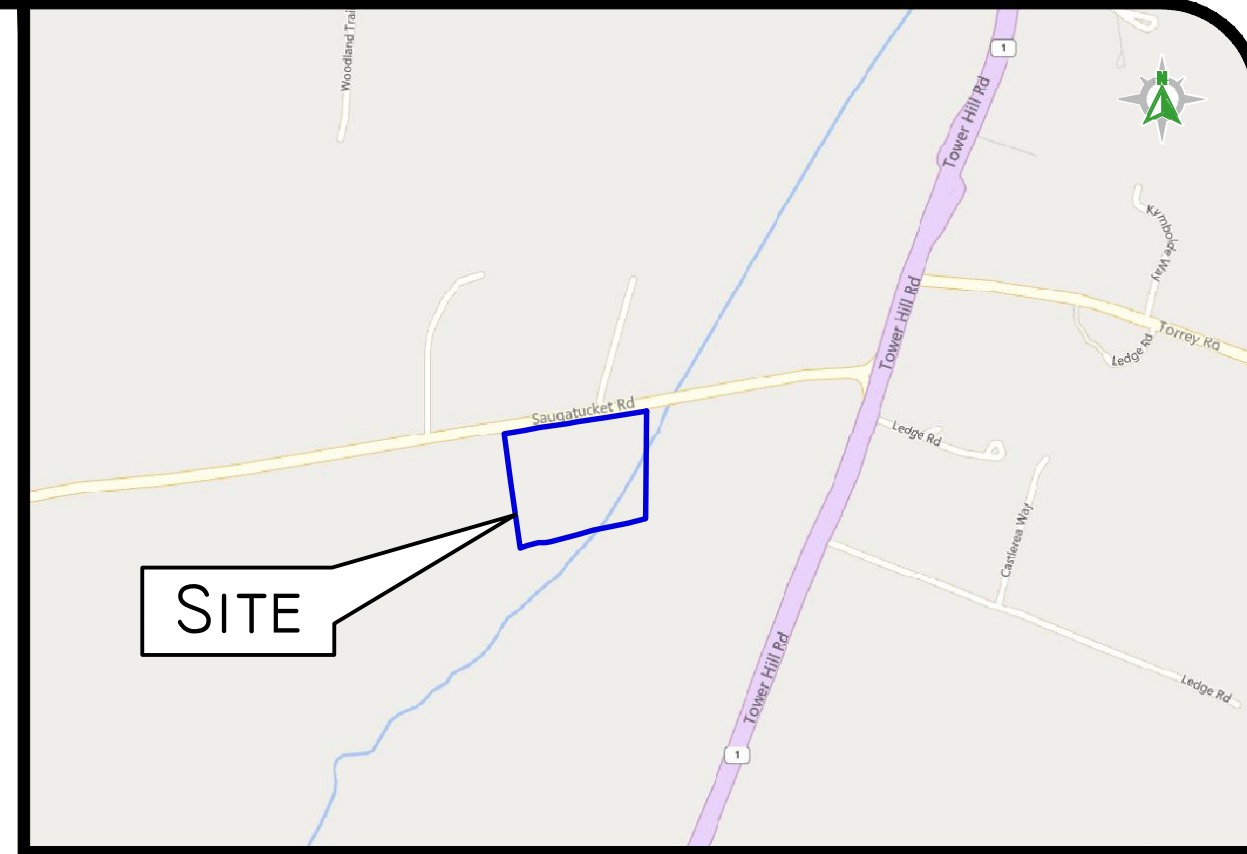
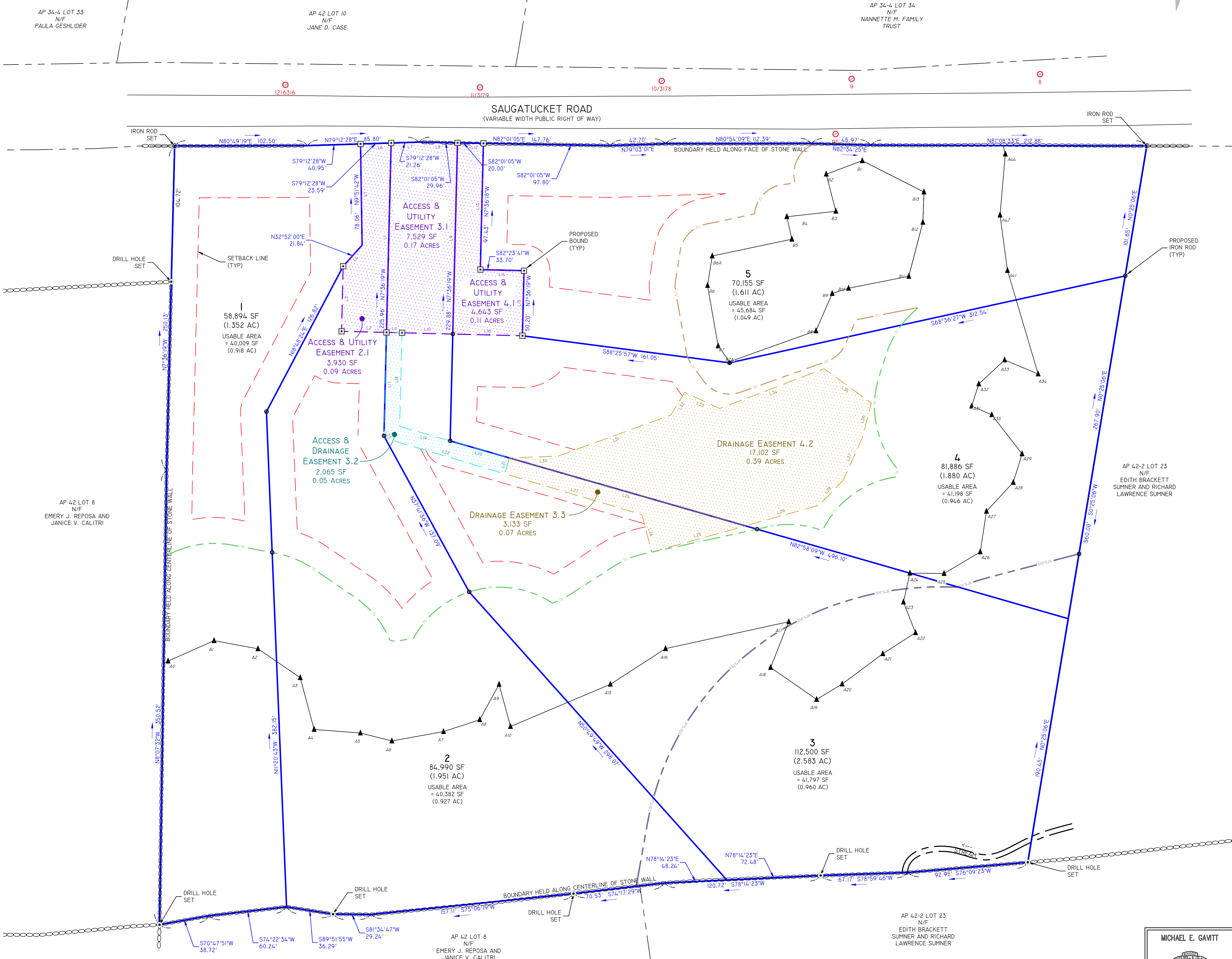


Z:\DEVELOPMENT\PROJECTS\1287-001 SAUGATUCKET ROAD\17A\AUTOCAD DRAWINGS\2387-001-REC.DWG PLOT# 8/5/2025



LOCUS MAP NOT TO SCALE

LEGEND table with symbols for various features: WATER LINE, SEWER LINE, GAS LINE, ELECTRIC LINE, DRAINAGE LINE, PROPERTY LINE, etc.

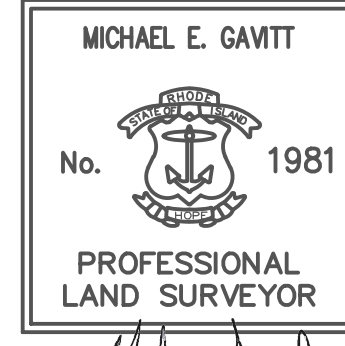
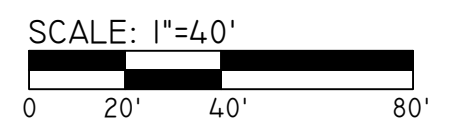
GENERAL NOTES: 1. THE PARCEL IS FOUND ON ASSESSOR'S PLAT 42, LOT 9 IN THE TOWN OF SOUTH KINGSTOWN, WASHINGTON COUNTY, RHODE ISLAND. 2. THE OWNER PER DEED BOOK 1875, PAGE 370 IS JAE MILLS, LLC. 3. THIS SITE IS LOCATED IN FEMA FLOOD ZONE X...

DIMENSIONAL REGULATIONS table comparing current zoning requirements with provided standards for lot area, frontage, and setbacks.

LINE TABLE tables providing detailed bearing and length data for various lines and easements on the site plan.

SURVEYOR'S CERTIFICATE: THIS SURVEY HAS BEEN CONDUCTED AND THE PLAN HAS BEEN PREPARED PURSUANT TO 435-RICR-00-00-1.9 OF THE RULES AND REGULATIONS ADOPTED BY THE RHODE ISLAND STATE BOARD OF REGISTRATION FOR PROFESSIONAL LAND SURVEYORS ON NOVEMBER 25, 2015...

THIS PLAN SHOULD BE INDEXED BY THE FOLLOWING STREETS: SAUGATUCKET ROAD



MICHAEL E. GAVITT, RIPLS #1981, COA #LS.000A160

Diprete Engineering logo and contact information: Two Stafford Court, Cranston, RI 02920. Tel: 401-943-1000. www.diprete-eng.com

THIS PLAN SET MUST NOT BE USED FOR CONSTRUCTION PURPOSES UNLESS IT IS ACCOMPANIED BY A REGISTERED PROFESSIONAL ENGINEER OF DIPRETE ENGINEERING.

Revision table with columns for No., Date, Description, and Design/Check/Drawn/Plotted initials.

RECORD PLAN SAUGATUCKET ACRES ASSESSOR'S PLAT 42 LOT 9 SOUTH KINGSTOWN, RHODE ISLAND. JAE MILLS, LLC. 90 MADISON ST. STE 610, WORCESTER, MA 01608. TEL: 774-696-3814