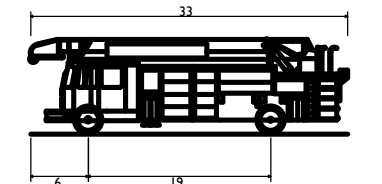
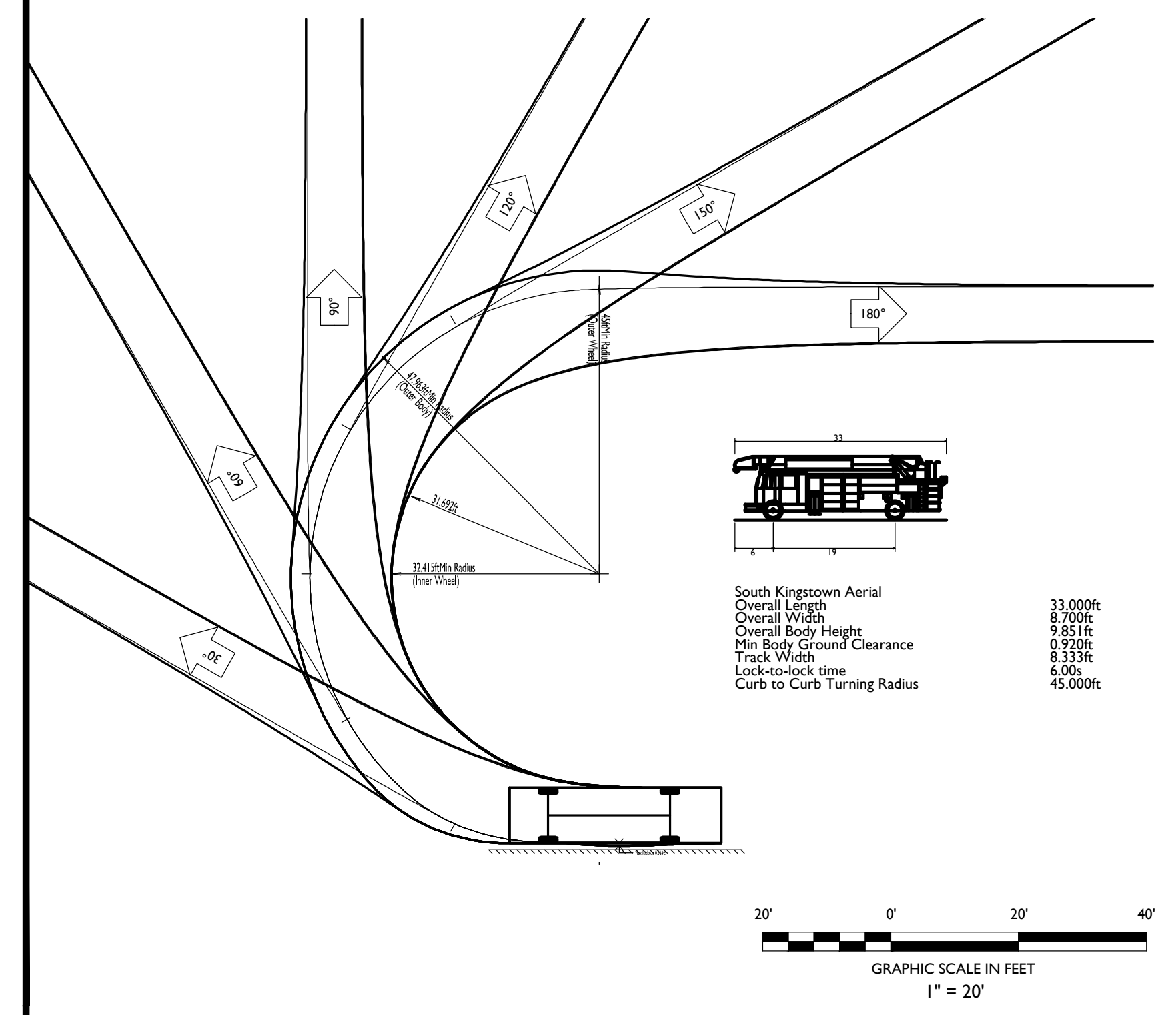
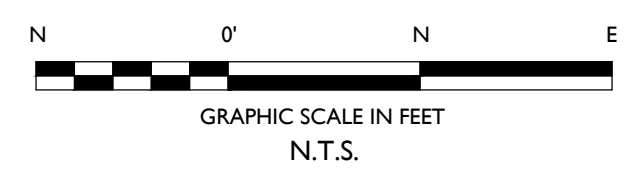
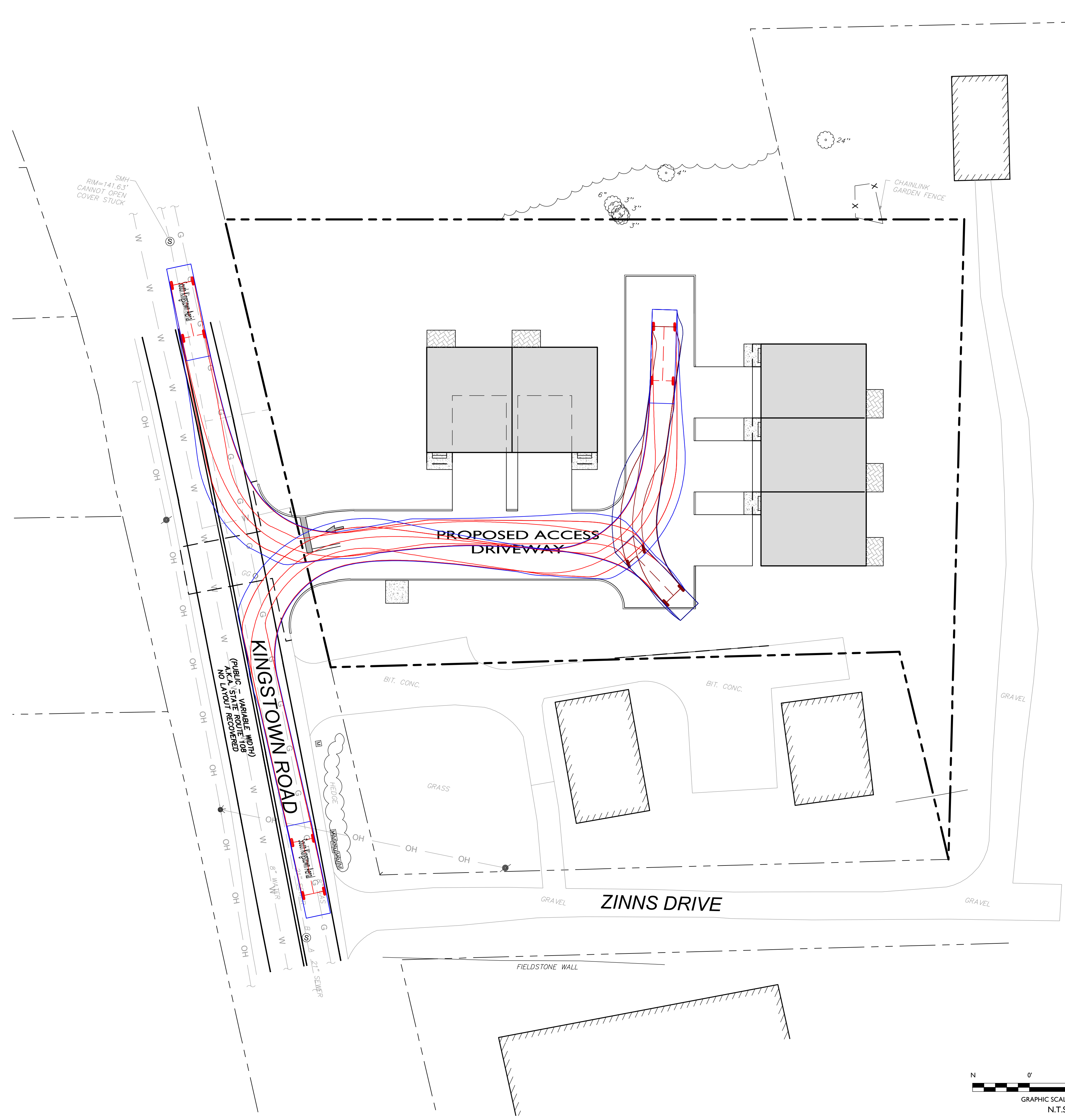
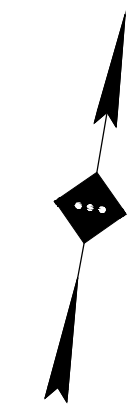


Z:\BOSTON\BOS250053\BOS250053\RELEVY\RELEVY - 2001 KINGSTOWN ROAD, SOUTH KINGSTOWN, RHODE ISLAND\DWG\K-1.DWG



South Kingstown Aerial
 Overall Length 33.000ft
 Overall Width 8.700ft
 Overall Body Height 9.851ft
 Min Body Ground Clearance 0.930ft
 Track Width 8.331ft
 Lock-to-lock time 6.00s
 Curb to Curb Turning Radius 45.000ft



TRUCK MANEUVERING EXHIBIT

APPLICANT & OWNER
 ASHWORTH INVESTMENTS, LLC.
 40 MALBONE STREET
 WARWICK, RHODE ISLAND

PROPOSED MULTI-HOUSEHOLD LAND DEVELOPMENT PROJECT

BLOCK 32-4, LOT 21
 ZONE HU - MIXED USE
 TOWN OF SOUTH KINGSTOWN
 WASHINGTON COUNTY, RHODE ISLAND

JOSHUA H. KLINE, P.E.
 RHODE ISLAND LICENSE No. 13607
 LICENSED PROFESSIONAL ENGINEER



SCALE: AS NOTED PROJECT ID: BOS-250053

TITLE: **FIRE TRUCK INGRESS/EGRESS SITE ACCESS EVALUATION**

DRAWING: **K-1**



STONEFIELD
 engineering & design

Rutherford, NJ · New York, NY · Salem, MA · Providence, RI
 · Princeton, NJ · Tampa, FL · Birmingham, MI
 www.stonefielddesign.com

56 Pine Street, Providence, Rhode Island
 Phone 617.203.2076

NOT APPROVED FOR CONSTRUCTION

ISSUE	DATE	BY	DESCRIPTION
01	03/27/2026	NNS	FOR MUNICIPAL RESUBMISSION
00	12/05/2025	AJD	FOR MUNICIPAL SUBMISSION